



## WATCH HILL POPULAR ITINERARY

### DAY 1: WATCH HILL TO FISHER'S ISLAND

Begin the getaway in beautiful Watch Hill! Set sail to picturesque Fisher's Island & take in the views while enjoying a remarkable dinner on 'Andromeda.'

### DAY 2: FISHER'S ISLAND TO SAG HARBOR

Sail across the Sound and cruise through Gardiners Bay. Anchor south of Shelter Island or grab a dock at the Waterfront Marina in Sag Harbor. Have dinner at Bilboquet and enjoy a night in The Hamptons.

### DAY 3: SAG HARBOR TO MONTAUK

Take a day trip on a B&G Hinckley and circumnavigate Shelter Island while enjoying cuisine from Marie Eiffel Market. Once back on 'Andromeda' cruise to Montauk & spend a few hours relaxing on the beach.

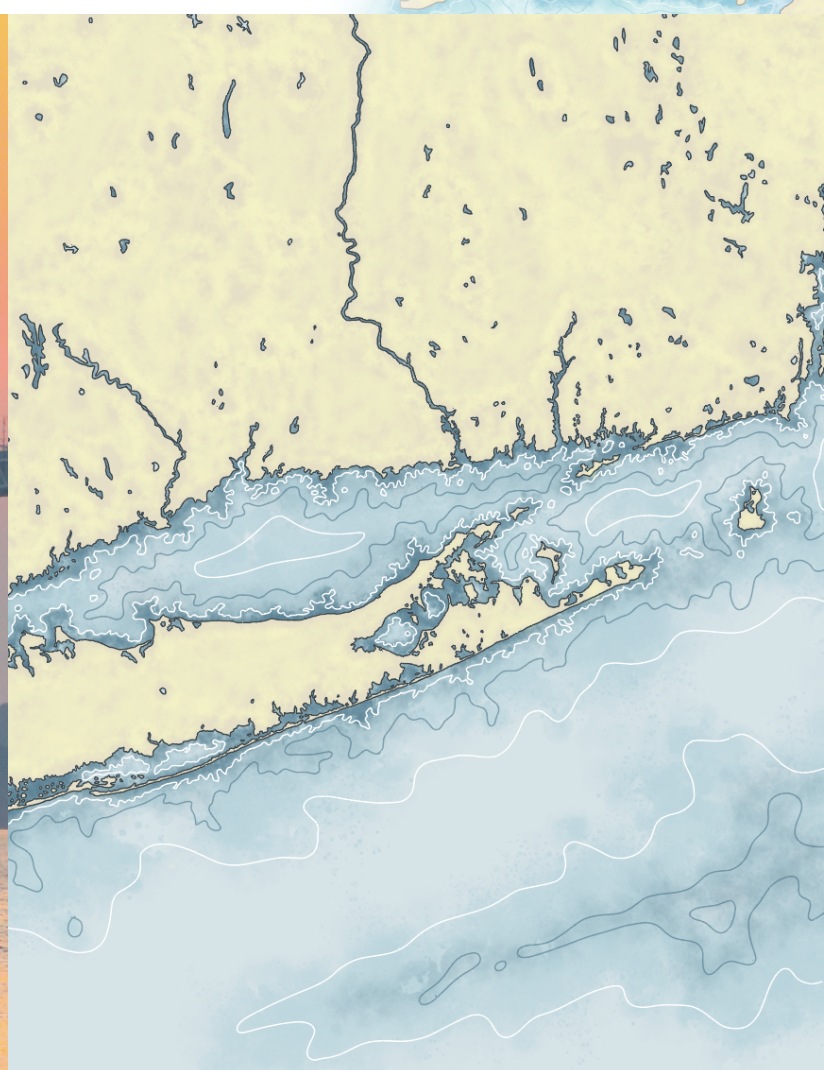
### DAY 4: MONTAUK TO BLOCK ISLAND

Wake up and enjoy breakfast at sea while underway to Block Island for a day of cycling around town. End the day at Ballards or the Oar for a mudslide, making this the quintessential New England summer day.

### DAY 5: BLOCK ISLAND TO NEWPORT

Pick up the morning breeze and cruise to historic Newport, sail past lighthouses & mansions lining the shoreline all the way to the harbor.

Contact to book: [Info@bartonandgray.com](mailto:Info@bartonandgray.com) / (617) 728-3555



Considered one of the most unique Clubs in North America, Barton & Gray Mariners Club outfits the best experiences on the water, operating a fleet of captained Daychasers, Hinckleys, Sailing Catamaran & Boston Whalers from Downeast Maine to the Caribbean. All captained, all provisioned and all at your beck and call, Members enjoy a lifetime of yachting with unlimited access to every yacht in every harbor.

