



NEWPORT TO NANTUCKET

POPULAR ITINERARY

DAY 1: NEWPORT

Board Andromeda in Newport Harbor! Find a seat on the bow, cocktail in hand, and cruise out to Mackerel Cove for an afternoon of sunbathing and swimming.

DAY 2: NEWPORT TO CUTTYHUNK

Sail from Narragansett Bay to Cuttyhunk Island. Anchor in the harbor and be sure to flag down the Floating Raw Bar for freshly shucked clams and oysters. Take the tender ashore and make the way to Lookout Tower Park to take in the scenery before returning to 'Andromeda' for an expertly prepared meal on the aft deck.

DAY 3: CUTTYHUNK TO VINEYARD HAVEN

After breakfast onboard there will be plenty of time for swimming or tubing in the harbor before sailing east to Vineyard Haven, home of the iconic Black Dog Tavern. Stroll down Main Street and enjoy all of the shops and restaurants in town!

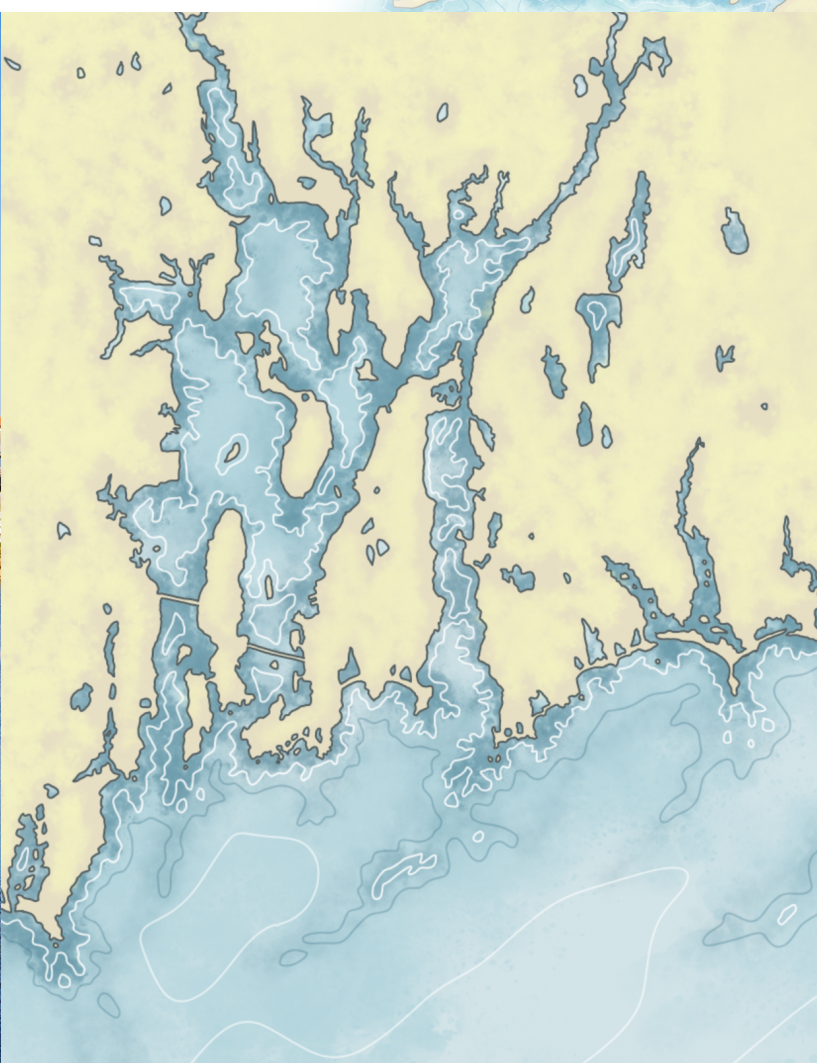
DAY 4: VINEYARD HAVEN TO EDGARTOWN

Edgartown is just a quick sail away. Spend the day exploring the town and beaches or hop on a B&G Hinckley and zip up to Larsen's for seafood and sunset

DAY 5: EDGARTOWN TO NANTUCKET

On the final sail find the best seat in the sun while being swept away to New England's favorite island, Nantucket! B&G's first harbor has plenty to do, see, and eat!

Contact to book: Info@bartonandgray.com / (617) 728-3555



Considered one of the most unique Clubs in North America, Barton & Gray Mariner's Club outfits the best experiences on the water, operating a fleet of captained Daychasers, Hinckleys, Sailing Catamaran & Boston Whalers from Downeast Maine to the Caribbean. All captained, all provisioned and all at your beck and call, Members enjoy a lifetime of yachting with unlimited access to every yacht in every harbor.

www.bartonandgray.com
@marinersclub
(617) 728-3555

